



**RLKU**  
MEDICAL & DENTAL COLLEGE



# PROSPECTUS

# CONTENTS

- Introduction
- Vision & Mission
- Outcomes of the MBBS Program
- Message from the Chairman
- Message from the Chief Executive
- Message from the Principal
- Message from the Vice Principal
- Recognition (Local/International)
- Hameed Latif Hospital
- Hameed Latif Teaching Hospital

## WHY CHOOSE RASHID LATIF KHAN UNIVERSITY MEDICAL COLLEGE ?

- Strategic Location
- Academic Excellence
- Hostels
- Professional Faculty
- State-of-The Art Facilities
- Comprehensive Clinical Training
- Supportive Learning Environment
- Extra-Curricular & Personal Development Opportunities

## Basic Sciences Departments

- Anatomy
- Physiology
- Biochemistry
- Pharmacology
- Forensic Medicine
- Behavioral Sciences
- Pathology
- Community Medicine

## CLINICAL DEPARTMENTS

- Internal Medicine
- Cardiology
- Gastroenterology
- Pulmonology
- Dermatology
- Paediatrics & Neonatology
- Psychiatry & Behavioral Sciences
- Radiology
- General Surgery
- Orthopedics Surgery
- Otorhinolaryngology
- Ophthalmology
- Anesthesia
- Obstetrics & Gynaecology
- Skills Lab

## Department of Medical Education

## Quality Assurance Department

# INTRODUCTION

Faculty is the foundation interwoven into the various aspects of the institution. At RLKUMC, we are proud to own our faculty and expect the same from the faculty. Faculty is not just a word but holds a sense of immense responsibility. The teaching role of faculty members reflects their centrality in addressing the primary educational mission among colleges and universities. As faculty members teach, they disseminate and impart basic or applied knowledge to students and assist students with learning and applying it. The teacher is the content expert, and students are regarded as learners or novices to the academic discipline or field of study. Faculty members are expected to follow developments in the field, so their expertise and knowledge base remains current. Faculty is called upon to perform various roles in addition to designated activities, and the uniqueness of each faculty augments the institutional mission.

These guidelines will help new faculty to settle in the institution and clarify further promotions, tenure, and personal and professional growth planning with regular discussion with mentors and department heads.

## ABOUT RLKU MEDICAL COLLEGE

Rashid Latif Khan University Medical College and Hameed Latif Teaching Hospital (HLTH) are constructed on 13 acres on Ferozpur Road, Lahore, 30 minutes drive from Kalma Chowk, Lahore. This purpose-built campus consists of a Medical College building, HLTH (350 beds), and hostels for girls and boys with ample space for future expansion. Its environment- friendly features make it a truly green building.

The basic sciences departments are housed in the College block keeping in view the movement and flow of students in an orderly fashion. Each department's facilities can cater to more than 150 students per class. The library and the lecture theatre block are spaced out to provide the needed quietness and isolation while adding to the aesthetics of the building structure.

An essential component of a medical college is the teaching hospital, without which no clinical learning is possible. RLKUMC has a well-equipped hospital, Hamid Latif Teaching Hospital, affiliated with it.



## CORE VALUES

- C:** Critical Thinking
- H:** Humane Leadership
- A:** Accountability
- M:** Motivated Team Player
- P:** Perseverance
- I:** Integrity
- O:** Ownership
- N:** Nobility
- S:** Self Discipline
- '**: Represents the apostrophe "s", which stands for professionalism

## OUR VISION

To develop a community of humane professionals and academia leading to a positive impact on humanity.

## OUR MISSION

To groom competent healthcare professionals who are outstanding academicians and researchers providing compassionate and empathetic health care services to the community.

To provide and promote quality education, research, and skills to keep healthcare at par with International standards.

To develop health care leaders of the future.

# OUTCOMES OF THE FIVE YEAR MBBS PROGRAM

By the end of five-year MBBS Program, our graduate will be able to demonstrate:

## **Application of Knowledge**

Apply biomedical scientific principles and methods to medical practice, integrating them into patient care and clinical decision-making.

## **Professionalism**

Apply their knowledge and skills in a competent, ethical, and professional manner, taking responsibility for their actions in complex and uncertain situations.

## **Communication and Interpersonal Skills**

Communicate effectively, openly, and honestly with patients, their relatives, and colleagues and while maintaining patient confidentiality.

## **Diagnosis and Medical Management**

Perform a range of diagnostic, therapeutic, and practical procedures safely and effectively. Identify procedures requiring supervision based on their level of skill and experience to ensure patient safety. Prescribe medication safely, appropriately, and effectively while being aware of common causes and consequences of prescribing errors.

## **Leadership and Teamwork**

The college encourages the development of student's well-being in leadership and team building. Workshops on personal growth and empowerment are conducted, focusing on the overall well-being of faculty and students, along with the acquisition of leadership skills.

## **Health Promotion and Illness Prevention**

Apply the principles, methods, and knowledge of public health to improve health and promote sustainable healthcare. Understand the role of advocacy and public awareness in disease prevention.

## **To Promote Evidence-Based Medicine**

Demonstrate and promote evidence based medicine as practiced globally.

## **Clinical Research and Scholarship**

Apply scientific method and approach to medical research, integrating them with a range of information to make informed care decisions.



## MESSAGE OF THE CHAIRMAN PROF. DR. RASHID LATIF KHAN

It is my strong belief that students who graduate from RLKUMC will prove to be masters in the fields of medicine with a thorough understanding of the world around them. RLKUMC will also develop as a center of excellence for the future training of not only doctors and nurses but other paramedical personnel.



First Doctor from Pakistan to do MRCOG & FRCS (UK) 1968 & 76. First Doctor from Pakistan to introduce Diagnostic Laparoscopy (1974). Wrote First Text-book of Gynaecology of Pakistan (1982). First to introduce IVF technology (1984).



First Gynaecologist from Pakistan to be invited as Examiner by the Royal College of Obstetricians & Gynaecologists, London U.K. (1985). Delivered the First IVF baby in Pakistan (1989) Founder President IVF Society of Pakistan.



First Gynaecologist of Pakistan to be awarded SITARA-E-IMTIAZ (1992). Founder President of South Asian Federation of Gynaecology (1996). First Professor Emeritus of PGMI (1998).



## **MESSAGE OF THE CHIEF EXECUTIVE**

### **Ms SABAHT KHAN**

I'm delighted that you are considering studying at RLKU Medical College, one of the private medical colleges in Pakistan. Whatever your aspirations, we can help you on the journey to your future career.

As a RLKUMC student you will graduate with more than just a degree. The opportunity and experiences at RLKU Medical College will help you grow as an employable, entrepreneurial and a confident citizen.

We would like you to graduate as a professional doctor. Our prospectus is full of information to help you make an informed choice about your higher education, as we understand what an important decision choosing the right medical college can be.



## **MESSAGE OF THE PRINCIPAL PROF. DR. ARIF M. SIDDIQUI**

Greetings from Rashid Latif Khan University Medical College. At RLKU Medical College, we are committed to producing first-class doctors who will willingly serve their communities with both preventive and curative healthcare needs. This is a tall order that begins with laying a strong foundation upon which a sturdy structure can be erected, and we provide both. Our faculty is fully capable and adept at grooming boys and girls, transforming them into world competitors over the years. Our vision does not stop at the MBBS degree. We are very cognizant of the fact that a mere degree does not make a good doctor; this is why we also emphasize the development of communication skills, leadership, teamwork, empathy, and professionalism, which are aptly reflected in our core values: CHAMPIONS.

We have also taken it upon ourselves to produce men and women of such caliber that they can easily compete and succeed in equivalence examinations in the USA, UK, Australia, and Canada. The College provides all the necessities as laid down by the PMDC for the comfort and care of medical students, as well as prepares them for local postgraduate examinations. Rashid Latif Khan University Medical College is fully aware of your dreams and ambitions and promises to help fulfill them.



## ABOUT PROF. DR. ARIF M. SIDDIQUI

Prof. Arif M. Siddiqui graduated from King Edward Medical College in 1981 and was awarded two silver medals for his academic performance. After completing his house job at Mayo Hospital, he proceeded to the UK for further training and attained MRCP (UK) in Internal Medicine and Gastroenterology/Hepatology. He was awarded the Fellowship of the Royal College of Physicians and Surgeons in 1998, the Fellowship of the Royal College of Physicians and Surgeons of Edinburgh in 1999, and the Fellowship of the Royal College of Physicians London in 2000 for his meritorious services.

Upon his return to Pakistan, he served at Allama Iqbal Medical College for 27 years, retiring as Vice Principal, Professor of Medicine, and Director of Gastroenterology. He also worked at the Pakistan Kidney and Liver Institute and Research Center for five years, where he served as its Dean for some time.

Prof. Arif M. Siddiqui has been an examiner for MBBS and MD programs at Punjab University, UHS, KEMU, and Aga Khan University. He is also an examiner and supervisor for the College of Physicians and Surgeons Pakistan. He is the former President of the Pakistan Society of Gastroenterology and the former President of the Pakistan Society of Hepatology; the latter bestowing upon him a Lifetime Achievement Award. Prof. Arif M. Siddiqui is best known in the medical circles of Pakistan as an astute teacher trainer, and a highly competent physician.

### **Prof. Dr. Arif Mahmood Siddiqui**

MBBS (KE); MRCP (UK); FRCP (London)

FRCP (Edin), FRCP (Glasgow)

PRINCIPAL

RLKU Medical College, Lahore. Hameed Latif Teaching Hospital



## **MESSAGE OF VICE PRINCIPAL PROF. DR. FAHEEM MAHMOOD**

It gives me great pleasure to welcome you to Rashid Latif Khan University Medical College (RLKUMC), an institution dedicated to fostering excellence in medical education and healthcare.

At RLKUMC, we are committed to nurturing the next generation of healthcare professionals by providing a learning environment that emphasizes both academic rigour and compassionate care. Our faculty, with a deep passion for teaching and innovation, works tirelessly to ensure that our students not only acquire knowledge but also develop the skills and ethical values essential for success in the medical field. We encourage critical thinking, evidence-based practice, and a patient centred approach that prepares our graduates to meet the challenges of a rapidly evolving healthcare landscape.

At RLKUMC, we strive to create a community where curiosity is cultivated, collaboration is fostered, and leadership in medical practice is developed. As you embark on your academic journey, I invite you to explore the wealth of opportunities that our institution offers, and I look forward to witnessing the contributions you will make in the world of healthcare.



# RECOGNITIONS & AFFILIATIONS

Recognized by

**Pakistan Medical & Dental Council Directory  
CPSP for FCPS Training**

Affiliated with

**University of Health Sciences Directory**

Approved by

**Ministry of Health**

Listed in

**International Medical Education Directory  
WHO Avicennia Director**



## HAMEED LATIF HOSPITAL

Hameed Latif Hospital was established in 1994, as a small 20 bed hospital to provide maternity services mainly to the middle class. Since then, thanks to the endeavours of the management and support of consultants, it has grown into 302 bedded state of the art tertiary care hospital and is one of the fastest growing private sector hospitals in Pakistan.

Hameed Latif Hospital is recognized for post-Graduate training of Medical Officers from the College of Physicians and Surgeons Pakistan. Post-Graduate students are provided training in the discipline of Gynaecology / Obstetrics, Paediatrics/ Neonatology, Surgery, Medicine and Anaesthesiology. The hospital provides 24 hours emergency services which are backed up by well-equipped 14 Operation Theatres, 03 Angioplasty and Angiography Units, Delivery Rooms, CCU, Intensive Care units, Clinical indoor & Outdoor departments.

Pediatrics, Obs & Gynae have been our flagship departments for many years but now many new specialist including Cardiology & Cardiac Surgery, Neurology and Neurosurgery, Orthopedic Surgery, Urology & Lithotripsy, Plastic Surgery, Dermatology & Cosmetology, ENT, Ophthalmology, Neurology, Pulmonology, Endocrinology, Medical Oncology, Gastroenterology, Nephrology & Dialysis, Laparoscopic Surgery & Thoracic Surgery are all being provided under one roof.

The hospital has well-equipped Dialysis Centre, Endoscopy unit, Blood Bank & Diagnostic facilities. Hospital diagnostic facilities like Laboratory and Radiology departments have been equipped with state-of-the-art equipment.

Hameed Latif Hospital also has a well renowned "LIFE IVF Centre" where infertility treatments are being offered to the patients. The Centre was the first to be established in Pakistan and is one the best in the region. Hameed Latif Hospital is supported by excellent Hameed Latif Pharmacy and Ambulance services which are available 24 hours for the deserving patients.

Hameed Latif Hospital is a standard bearer for the provision of quality healthcare to the parents where more than 1300 Doctors, Nurses, paramedical staff and support staff work to ensure patient care.





## **HAMEED LATIF TEACHING HOSPITAL**

Hameed Latif Teaching Hospital is the teaching hospital of RLKU Medical College Lahore. It is located on 2.5-KM Haer Road, Sua-e-Asal, 28-KM Main Ferozepur Road Lahore, near Khanoharni Village. It started on October 25, 2022, and is currently a 348 bedded hospital with plans to expand up to 1000 beds in future.

It has approximately 93,000 square feet of covered area and a 10-Acre campus for the entire college and hospital. It is well-equipped and well-furnished, providing a wide range of health care services, including Surgery, Medicine, Gynaecology/Obstetrics, Ophthalmology, ENT, Neurology, Psychiatry, Orthopaedics, Pediatrics, and Dermatology. Plans are in place for further expansion into specialized services such as Cardiology and Neurosurgery.

It is providing 24/7 Emergency, Blood Bank, Radiology & laboratory services. The OPD Operates from 8:00 AM to 3:00 PM, Monday to Saturday.

This hospital has brought a sigh of relief to the local community by offering quality health care services at affordable cost. As a teaching hospital, it is also providing cost effective quality healthcare to patient form across the city and province.

Community services are an integral part of the hospital's mission, which includes hosting frequent free medical camps. Currently, the OPD & IPD offer entirely free health care to the public.

## ABOUT OUR CULTURE



The culture of Lahore is a reflection of the lifestyle, festivals, literature, music, language, cuisine and socioeconomic conditions of its people, which are also evident in campus life.

## PLAY GROUND



RLKU Medical College is a private college with a purpose-built campus featuring separate playgrounds for cricket, football and basketball. As a fully residential campus, it is essential to offer a variety of sports facilities to keep students engaged and physically fit. Therefore, the college offers a vast ground and basketball courts for sports enthusiasts.

## WHY CHOOSE RLKU Medical College?



The campus was designed to provide students with the best possible university experience. It encompasses lush green land and is located in the suburbs of Lahore, easily accessible by public and college transport. The building offers spacious lecture halls, well-equipped laboratories, and a state-of-the-art audiovisual auditorium for both curricular and extra-curricular activities.

## MOSQUE



A mosque has been built on campus. At RLUK Medical College, we respect all religions and cultures and focus on moral character development.

## SKILL LAB



The students are given practical training classes in skills lab to polish their clinical skills.

## COMMON ROOMS



Separate common rooms for boys and girls are located on the second floor of the college building where students can relax and have discussions.

## OUR LIBRARY

Our library has latest of medical textbooks and reference books to assist students during their preparation for examination. A spacious library is located in a separate block adjacent to the college building. It has all the essential text and reference books along with reference journals. The books are indexed and there is an e-library which as access to on-line journal and books. The library has been organized to meet the requirements of students and teachers and felicitates research work.

**It has Following Sections:**

- Basic Sciences
- Clinical Sciences
- Reference Book
- Reading Area
- E-library
- Urdu/English
- Literature





## OUR FACILITIES

We are very pleased to tell you about our campus facilities that distinguish us from all the leading medical colleges. RLKU Medical College offers experiences, that foster a strong student community and helps them grow both personally and professionally. A healthy environment is provided to intellectually curious students, and prizes are offered as incentives to high-achievers.

## COMPUTER LAB

Latest Computers are available in our computer lab to facilitate our students.

Our computer lab offers around the clock internet facility to all of the students.



## TRANSPORT

Public transport is available at walking distance. The college runs a daily shuttle service from Hameed Latif Hospital (Opposite Qaddafi Stadium on Ferozpur Road) to RLKU Medical College and back for the convenience of the faculty and the students.



## COLLEGE CAFETERIA

A cafeteria has been established within the campus that ensures food is prepared in a hygienic, clean, and well maintained environment. It provides a dedicated space for student and staff, serving meal at reasonable prices. The spacious cafeteria offers a variety of hot and cold dishes across all meals, upholding strict hygiene standards throughout food preparation.



## ATTACHED HOSPITAL

The attached hospitals are the country's most successful and highly recognized healthcare centers with a dynamic's foundation of progressive care, practice, education and research following the footsteps of living legend Prof. Rashid Latif Khan (Sitara-E-Imtiaz).

The 348 bed teaching hospital, HLTH Hospital, is at walking distance from the college campus. Its appropriate location has allowed it to facilitate nearby villages and town, making it a pioneer health facility in this area.





## FACULTY

The highly-qualified and experienced faculty of RLKU Medical College is deeply committed to medical sciences and is fully motivated to impart knowledge to the students. They focus on creating an environment where students can thrive, experience stress-free, interactive learning, and benefit from a wide array of training facilities.

Each faculty member mentors ten students. The small size of mentoring sessions makes sure that the students are being counselled individually regarding career progression, research publications and stress management. This strategy allows the students to build affirmative relationships with faculty members and other students.

**Basic Sciences | Clinical Sciences**

**Medical Education | Quality Assurance**



## BASIC SCIENCES

The basic sciences comprise of Anatomy, Physiology, Biochemistry, Pharmacology, Pathology, Community Medicine, Forensic Medicine and Behavioral Sciences. Traditionally, the medical syllabus was introduced to medical students through the subjects of Anatomy, in order to make them aware of the structure of the human body, and physiology, the study of normal function of the body systems. Only basic sciences subjects were taught to the students until they entered the clinical years where clinical subjects were taught.

Over the last few years however, the strategy of medical education have evolved and more emphasis is now laid on combining the basic sciences with the clinical subjects in the years of the medical curriculum. The objective is to provide an integrated approach to learning for better understanding of structure, function and the process of disease.

As an affiliate of University of Health Sciences (UHS), the syllabus outline by the university is followed. According to this syllabus, clinical subjects are introduced in the early years alongside basic sciences subjects.

# DEPARTMENT OF ANATOMY

Anatomy is study of the structure of the human body. The three main approaches to studying anatomy are regional, systemic, and clinical (or applied), reflecting the body's organization and the priorities and purposes for studying it.

## DISSECTION HALL

The large, well ventilated dissection hall can accommodate more than 150 students where they will get an opportunity to work on cadavers for dissection and demonstration. There is a state-of-the-art mortuary room for the cadavers.

## HISTOLOGY LAB

Spacious well-equipped laboratory, multi-head teaching, microscope, projection microscope with large LED is used to enhance students learning.

## MUSEUM

Latest imported models of anatomy are displayed in a spacious Museum located across the Dissection Hall. The museum also has a large number of dissected specimens to illustrate various structures on actual parts of the human body.

## FACULTY OF ANATOMY

### Prof. Dr. Shakeela Nazir

MBBS, M.Phil  
Professor (HOD)

### Prof. Dr. Nabeela Habib

MBBS, M.Phil  
Professor

### Dr. Shahzad Chohan

MBBS, M.Phil  
Associate Professor

### Dr. Faeza Rauf

MBBS, M.Phil  
Associate Professor



# DEPARTMENT OF PHYSIOLOGY

Physiology is the study of human function and can be investigated at the level of cells, tissues, organ systems and the whole body. The underlying goal is to explain the fundamental mechanisms that operate in a living organism and how they interact.

The study of physiology is of central importance in medicine and related health sciences, as it underpins advances in our understanding of disease and our ability to treat it more effectively.

Faculty has a very disciplined, experienced, professional, innovative, and conceptual approach towards the subject and covers all the aspects of altruism towards their students.

## FACULTY OF PHYSIOLOGY

### **Prof. Dr. Faheem Mahmood**

MBBS, M.Phil, CHPE  
Professor (HOD)

### **Prof. Dr. Hifza Noor Lodhi**

MBBS, M.Phil  
Professor

### **Dr. Afsheen Akbar**

MBBS, M.Phil Ph.D, CHPE  
Associate Professor



# DEPARTMENT OF BIOCHEMISTRY

Biochemistry has a major impact on all the areas of the life sciences including cell biology, molecular biology and molecular genetics. Physicians are faced with biochemistry on their daily basis about disease manifestation and abnormal chemical processes associated with the disease. Nutritionist evaluate dietary needs based on biochemistry. The pharmaceutical industry design molecules that mimic or alter the action of biomolecules. The main goal of biochemistry is to understand the structure of biomolecules and the relationship between their structure and function.

Our department excels in imparting clinically relevant knowledge of biochemistry to future medical doctors. The department is fully equipped with teaching aids and laboratory facilities and follows an efficient teaching methodology which includes formal lectures, small group discussion sessions and the practical classes. The teaching staff is tailored to take up the challenging academic assignments set up by the head of department. Student participation is encouraged to make the sessions interactive and productive. Hand-on training in diagnostic biochemistry (renal function tests, liver function tests, cardiac profile, blood glucose, bone markers and urinalysis) is also provided to students.

## FACULTY OF BIOCHEMISTRY

### **Prof. Dr. Iram Fayyaz**

MBBS, M.Phil, Ph.D, DCH  
Professor (HOD)

### **Prof. Dr. Shamim Akram**

MBBS, M.Phil  
Professor

### **Dr. Umer Saeed Ansari**

MBBS, M.Phil, Ph.D  
Associate Professor

### **Dr. Iram Arshad**

MBBS, M.Phil  
Assistant Professor



# DEPARTMENT OF PATHOLOGY

Pathology is a branch of medical science that involves the study and diagnosis of disease. It is devoted to the study of the structural, biochemical, and functional changes in cells, tissues, and organs that underlie disease. It is the bridge between science and medicine. Pathology is further divided into four disciplines: Microbiology, Chemical Pathology, Hematology and Histopathology.

It is very important for medical students to learn various aspects of pathology practically to develop directed clinical approach. No doubt, having a sound knowledge of Pathology, could lead them towards excellence in their clinical skills.

## FACULTY OF PATHOLOGY

### **Prof. Nadia Mahmood**

MBBS, M.Phil, Ph.D (Scholar)  
Professor (HOD)

### **Prof. Dr. Salma Haq**

MBBS, M.Phil  
Professor

### **Dr. Naseem Aslam Ghuman**

MBBS, M.Phil  
Associate Professor

### **Dr. Mariam Danish Iqbal**

MBBS, FCPS  
Associate Professor

### **Dr. Hira Tariq**

MBBS, M.Phil (Micro)  
Assistant Professor





# DEPARTMENT OF COMMUNITY MEDICINE

The department of community medicine is a basic science department within the RLKU Medical College. The overall goal of the teaching of undergraduate students in Community Medicine is to prepare them to function as community and first level physicians. During the training, students should acquire knowledge and skills so that they can practice community medicine after graduation.

The department is run by a highly qualified and well experienced faculty in research work done in collaboration with international agencies and implementing various public health projects in Pakistan.

## FACULTY OF COMMUNITY MEDICINE

### **Prof. Dr. Maaz Ahmad**

MBBS, MCPS, FCPS  
Professor (HOD)

### **Dr. Neelam Raheel**

Associate Professor  
MBBS, DGO, DMCH, M.phil

### **Prof. Dr. Jamil Ahmad**

MBBS, Masters, M.Phil, Ph.D  
Professor

### **Dr. Zoofishan Imran**

MBBS, MSc, M.Phil  
Assistant Professor



# DEPARTMENT OF FORENSIC MEDICINE

The department of forensic medicine at Rashid Latif Khan University Medical College is pledged to provide world-class Forensic training to future doctors. It is committed to working towards the development of the field of Forensic sciences including forensic medicine and toxicology to the highest standards of excellence to facilitate the maintenance of law and justice in society.

To achieve these goals, the college has established a well-equipped department of forensic medicine and toxicology which is housed in a purpose-built building with state-of-the-art facilities including a fully equipped laboratory and museum of forensic medicine and toxicology. The faculty comprises of well trained and qualified medical and paramedical professionals with expertise in forensic medicine and toxicology. Training in forensic medicine and toxicology is carried out according to the requirements of the Pakistan Medical Commission and other regulatory bodies.

## FACULTY OF FORENSIC MEDICINE

### **Dr. Khyzar Hayyat Sukhera**

MBBS, DMJ, DMRD  
Assistant Professor

### **Dr. Asim Zia**

MBBS, MSc  
Assistant Professor



# DEPARTMENT OF PHARMACOLOGY

Pharmacology is a multi disciplinary science that deals with all aspects of drugs and their interactions with living organisms. Thus, pharmacologists study the physical and chemical properties of drugs, their biochemical and physiological effects, mechanisms of action, pharmacokinetics, and therapeutic and other uses.

Clinical pharmacology is the science of drugs in humans and their optimal clinical use in patients. It is underpinned by the basic science of pharmacology, with an added focus on the application of pharmacological principles and quantitative methods in the real human patient's population. It has a broad scope, from the discovery of new target molecules to the effects of drug usage in whole populations. It also includes application of pharmacological principles including pharmacokinetics and pharmacodynamics.

## FACULTY OF PHARMACOLOGY

### **Prof. Shahnaz Akhtar**

MBBS, M.Phil  
Professor (HOD)

### **Prof. Almas Begum**

MBBS, M.Phil  
Professor



# DEPARTMENT OF MEDICAL EDUCATION

Department of Examinations stands for evaluation and assessment done in transparent manner according to objectively made examination tools.

We use all the examining methods apparently for assessment of acquisition of knowledge, skills, and behaviors. The Controller of Examination shall be responsible for all matter relating to the conduct of examinations and perform such other duties as may be prescribed.

Department of Examination concerned with assessment of quality education to ensure that our graduates are nurtured to be sensitive, tolerant, humane and carry wisdom of knowledge, creative thinking, and research skills for their holistic development this will lead to their potential for assuming leadership roles in diverse fields of society.

## FACULTY OF MEDICAL EDUCATION

**Prof. Dr. Naureen Omar**  
MBBS, MHPE, M.Phil  
Director





## CLINICAL DEPARTMENTS

Hameed Latif Teaching Hospital, the on-site teaching hospital has all the major specialties housed in a purpose-built building. The hospital has been designed to facilitate smooth patient flow and is in line with current best practices of hospital design, dedicated to transforming healthcare experience. Our commitment to excellence, combined with a compassionate approach, sets us apart as a trusted healthcare provider.

Our clinical departments are meticulously designed to cater to a wide range of medical needs. From accidents and emergencies that demand swift attention to the nuances of dermatology that deserve meticulous care, we have you covered. Each department is staffed with experienced professionals who bring expertise, empathy, and a deep sense of responsibility to their roles.

We have diverse array of specialties, each tailored to meet the unique needs of our patients. Whether it's the precision of cardiology, the artistry of plastic surgery, or the sensitivity of pediatric care, our aim remains constant: to provide comprehensive healthcare that respects your dignity and well-being.

# DEPARTMENT OF INTERNAL MEDICINE

RLKU Medical College has a 67 bedded department of Internal Medicine and additionally it has divisions of Cardiology, Gastroenterology, Pulmonology, Neurology, Oncology, Dermatology and Psychiatry. The total bed strength being 232.

The department is spread over HLH and HLTH and provide diverse cases for student learning. The medical specialties mentioned above perform a host of procedures like angioplasties, stenting, gastroscopies, colonoscopies, ERCP, PEG placements, bronchoscopies, and latest chemotherapies for malignancies. All these procedures not only provide excellent learning opportunities but also serve as a stimulus for a young medical student to choose a specialty for himself.

## FACULTY OF INTERNAL MEDICINE

### **Prof. Arif Mahmood Siddiqui**

MBBS, MRCP (UK), FRCP (Glasgow, Edinburgh, London)  
Professor (HOD)

### **Prof. Raja Yasser Shahbaz**

MBBS, FCPS  
Professor

### **Prof. Zeba Aziz**

MBBS, Diplomat in American Board  
Professor

### **Dr. Aisha Aziz**

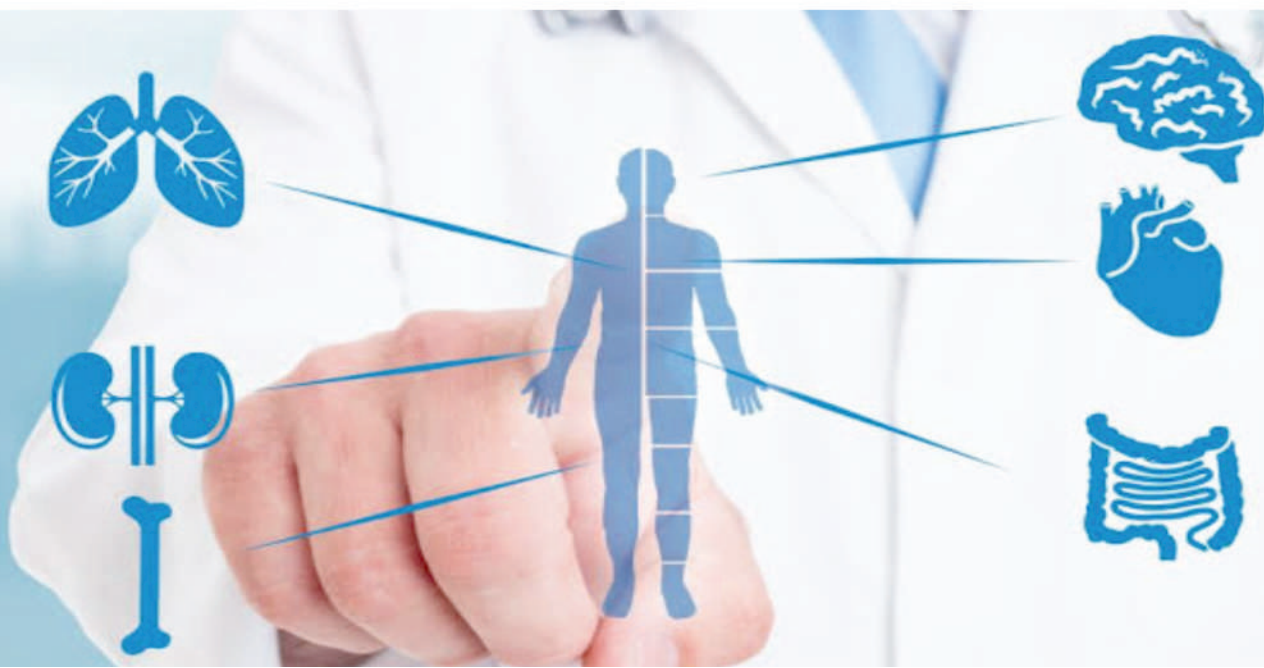
MBBS, FCPS  
Associate Professor

### **Dr. M. Murtaza Shafqat**

MBBS, MRCP, CCT  
Assistant Professor

### **Dr. Momina Qadir**

MBBS, FCPS  
Senior Registrar



# DEPARTMENT OF GENERAL SURGERY

Our aim is to train leaders in surgery and physicians who can operate in a community environment that upholds the highest ethical and professional standards while embodying the core surgical values of duty, honour, and responsibility to patients.

## FACULTY OF GENERAL SURGERY

### **Prof. Muhammad Tahir**

MBBS, FRCS  
Professor (HOD)

### **Prof. Syed Javed Raza Gardezi**

MBBS, FCPS, FRCS, DCPS, MCPS  
Professor

### **Prof. M. Nawaz Anjum**

MBBS, FCPS, MRCED, FACS (USA)  
Professor

### **Dr. Rohma Khan**

MBBS, FCPS  
Assistant Professor

### **Dr. Hira Aslam**

MBBS, FCPS  
Assistant Professor



# DEPARTMENT OF OBSTETRICS & GYNAECOLOGY

The Department of Gynaecology and Obstetrics has a very distinguished and highly skilled faculty. Department teaching strategies includes: lectures, clinical rotations, bed side teaching and operation theatre exposure. The department is fully equipped and has facilities to manage all kind of emergencies and elective cases. It provides services to vast population in Lahore and adjoining district of Kasur.

We started a hospital to provide better health care system to public. Department subspecialties includes gynecological endoscopy, infertility, reproductive endocrinology where state-of-art services are provided.

## FACULTY OF OBSTETRICS & GYNAECOLOGY

**Prof. Farrukh Zaman**  
FRCOG, FCPS, MCPS, MBBS  
Professor (HOD)

**Prof. Yousaf Latif Khan**  
FCPS, MBBS  
Professor

**Dr. Saima Qurban**  
MBBS, FCPS  
Associate Professor

**Dr. Fauzia Anjum**  
MBBS, FCPS  
Associate Professor

**Dr. Sajida Imran**  
MBBS, FCPS  
Associate Professor

**Dr. Sumbal Altaf**  
MBBS, FCPS, MRCPI, DRCOG  
Assistant Professor

**Dr. Ayesha Arjmand**  
MBBS, FCPS  
Assistant Professor





# DEPARTMENT OF PAEDIATRICS

Paediatrics is a medical specialty focused on the physical, mental, and social health of children from birth to young adulthood. Paediatric care encompasses a wide range of health services, from preventive care to the diagnosis and treatment of acute and chronic diseases. It is the most spacious department at RLKU Medical College, with sufficient capacity to accommodate more than 150 students.

## FACULTY OF PAEDIATRICS

### **Prof. Saeed Aftab Ahmad**

MBBS, MRCP, Diplomat in American Board (Internal Medicine & Paediatrics)  
Professor (HOD)

### **Dr. Madiha Fayyaz**

MBBS, FCPS  
Assistant Professor



# DEPARTMENT OF OPHTHALMOLOGY

The Department of Ophthalmology, part of the newly built RLKU Medical College and its associated Hameed Latif Teaching Hospital, is well-equipped to facilitate all types of eye patients. It includes Outpatient Departments (OPDs), fully functional operation theatres and indoor facilities. It is backed by highly qualified and experienced ophthalmologists with vast teaching experience.

## FACULTY OF OPHTHALMOLOGY

### **Prof. Khurram Azam Mirza**

MBBS, FRCS  
Professor (HOD)

### **Dr. Idrees Ahmed**

MBBS, FRCS  
Associate Professor

### **Dr. Nabeel Iqbal**

MBBS, FCPS, MRCSED  
Assistant Professor



# DEPARTMENT OF ANAESTHESIA

The Department of Anaesthesiology at Hameed Latif Teaching Hospital is committed to train the leading anaesthesiologists of tomorrow, and to provide clinical excellence in perioperative care. Our faculty is actively involved in clinical services provision, both in undergraduate and postgraduate training.

## FACULTY OF ANAESTHESIA

### **Prof. Hana Khurshid**

MBBS, MCPS, FCPS, MSc  
Professor (HOD)

### **Dr. Sabir Khan**

MBBS, FCPS  
Associate Professor

### **Dr. Zulqarnain Butt**

MBBS, MCPS, FCPS  
Associate Professor

### **Dr. Sana Afzal bir Khan**

MBBS, FCPS  
Senior Registrar

### **Dr. Qadeer Ahmed**

MBBS, FCPS  
Senior Registrar



# DEPARTMENT OF ORTHOPEDIC SURGERY

Orthopedic Surgery is a discipline of surgery that is concerned with the axial and appendicular skeleton and its related structures. There are various subspecialties or subdivisions including fractures, arthritis, soft tissue processes, tumours, metabolic conditions, paediatric orthopedics, hand and spine surgeries, sports injuries, congenital and acquired conditions.

Orthopedic problems can be a source of great misery for a patient. Due to lack of awareness and access, significant number of patients especially in the rural areas are mismanaged by quacks. The Orthopedic Department in this hospital aims to fill the gap of much needed services for the population in the surrounding areas.

## FACULTY OF ORTHOPEDIC SURGERY

**Prof. Rana Dilawaiz Nadeem**

MBBS, FRCS  
Professor (HOD)

**Dr. Ayaz-ul-Haq Chatta**

MBBS, MS  
Assistant Professor



# DEPARTMENT OF ANAESTHESIA

The Department of Anaesthesiology at Hameed Latif Teaching Hospital is committed to train the leading anaesthesiologists of tomorrow, and to provide clinical excellence in perioperative care. Our faculty is actively involved in clinical service provision, in undergraduate teaching, and in postgraduate training.

## FACULTY OF ANAESTHESIA

### **Prof. Hana Khurshid**

MBBS, MCPS, FCPS, MSc  
Professor (HOD)

### **Dr. Sabir Khan**

MBBS, FCPS  
Associate Professor

### **Dr. Zulqarnain Butt**

MBBS, MCPS, FCPS  
Associate Professor



# DEPARTMENT OF RADIOLOGY

Radiology, better known as diagnostic imaging is a branch of medicine that deals with imaging of internal body structures using various modalities. This helps in screening, diagnosis, treatment and follow up of multiple diseases. From simple x-rays to more complex imaging modalities, radiology occupies a vital role in disease management. Moreover, advancement in interventional radiology makes it even more vital by allowing image guided biopsies and procedures.

The department provides the facilities of x-rays, contrast procedures, portable x-rays, ultrasound and color doppler scan.

## FACULTY OF RADIOLOGY

### **Prof. Khawaja Khurshid**

MBBS, DMRD  
Professor (HOD)

### **Dr. Irfan Masood**

MBBS, DMRD, FCPS  
Assistant Professor

### **Dr. Beenish Javed**

MBBS, MCPS, FCPS  
Senior Registrar



## DEPARTMENT OF PSYCHIATRY & BEHAVIOURAL SCIENCES

The specialty of Psychiatry is getting wider recognition for its role in the society's well-being. The added dimension of Behavioral Sciences, especially for medical students has further enhanced its importance in a medical college. Our department of Psychiatry and Behavioural Sciences focuses on mental health awareness, mental health counselling, medical aspects of mental health, and teaching Behavioural Sciences as a subject in Medicine.

In our curriculum, we teach medical students psychiatry, psychology, sociology, and medical anthropology. We also promote research on Psychiatry, which encompasses mental health related to other medical fields as well. This helps medical students to make accurate connections between mental health effects on patients who have diseases related to other medical fields.

## FACULTY OF PSYCHIATRY & BEHAVIOURAL SCIENCES

**Dr. Shafqat Huma**

MBBS, FCPS

Associate Professor (HOD)





## ADMISSION PROCESS & POLICY

In accordance with the Admission Policy announced by the Government of Punjab on July 23, 2024. The University of Health Sciences (UHS) Lahore, requests applications from qualified candidates through its online application portal for admission to MBBS programs in Private Sector Medical Colleges of Punjab for the Session 2024-2025.

### ELIGIBILITY CRITERIA FOR MERIT SEATS

1. Candidates must have attained a minimum of 55% (i.e. 110/200) marks in MDCAT-2024 for MBBS and 50% (i.e. 100/200) marks for admission to the BDS program.
2. Candidates may also use their **MDCAT 2023** results for admission to the 2024-2025 session. if a candidate has taken both MDCAT-2023 and MDCAT-2024, he/she can use the better scores.
3. Candidates must hold a Higher Secondary School Certificate (HSSC) qualification or an equivalent 12th grade qualification recognized in Pakistan (IBCC Equivalence Certificate is mandatory in this case) with a minimum of 60% marks, and have passed the subjects of Biology and Chemistry and either Physics or Mathematics in the examination.
4. A domicile certificate from any district of Punjab is mandatory for public sector college. For private sector college, domicile of any district of Pakistan is acceptable.



## ELIGIBILITY CRITERIA FOR FOREIGN SEATS

1. No candidate shall be eligible for foreign quota seats unless they hold a permanent foreign nationality or are Overseas Pakistanis (being Pakistani citizens permanently residing in a foreign country), have studied and passed HSSC/12th grade examination or its equivalent from outside Pakistan with a minimum of 60% marks (IBCC Equivalence Certificate is mandatory in this case), and are residents of a foreign country at the time of applying for admission, along with possessing a certificate from the last attended institution to validate this. They must have passed the subjects of Biology and Chemistry and either Physics or Mathematics in the examination.
2. The Candidates must have qualified SAT-II with a minimum score of 550 in each subject or a foreign MCAT/ UCAT examination with a minimum of 50% marks in mandatory subjects of biology, chemistry and either of mathematics or physics in a Higher Secondary School certificate or equivalent.
3. In the event that any seat of the foreign quota remains vacant due to the unavailability of eligible candidates or otherwise, it shall be transferred to open merit, and the student shall be charged fees and dues prescribed for Merit Seats. An ineligible candidate shall not be admitted against such seats.

## MERIT CALCULATION FORMULA

The weighted criteria for calculating merit for admission shall be as follows:

Matriculation/SSC/Equivalent	10%
F.Sc./HSSC Pre-Medical/Equivalent	40%
MDCAT	50%





# RLKU MEDICAL COLLEGE

## MBBS Fee Structure for Admissions 2024-2025

### COLLEGE DUES

LOCAL STUDENTS						
Particulars		Year 1	Year 2	Year 3	Year 4	Year 5
Registration Fee	Rs.	53,673				
Annual Dues	Rs.	2,683,677	2,683,677	2,683,677	2,683,677	2,683,677
<b>Total</b>		<b>2,737,350</b>	<b>2,683,677</b>	<b>2,683,677</b>	<b>2,683,677</b>	<b>2,683,677</b>

FOREIGN STUDENTS						
Particulars		Year 1	Year 2	Year 3	Year 4	Year 5
Registration Fee	USD \$	240				
Annual Dues	USD \$	12,000	12,000	12,000	12,000	12,000
<b>Total</b>	<b>USD \$</b>	<b>12,240</b>	<b>12,000</b>	<b>12,000</b>	<b>12,000</b>	<b>12,000</b>

### HOSTEL CHARGES:

Particulars		Year 1 (Rs.)
Hostel Charges Per Month (Sharing)	PKR	32,000
Hostel Charges Per Month (Cubical)	PKR	52,000

1. Government Taxes will be collected under Government laws and regulations where applicable.
2. Hostel Charges are same for both local and foreign students and subject to increase annually.
3. Two meals per day are complimentary with hostel facility.
4. Fee will be refunded according to prevailing rules & regulations at that time.
5. Fee Structure may be revised in accordance with prevailing rules and regulations at that time.



**RLKU**  
MEDICAL COLLEGE

No. ....

4 latest,  
Passport size  
photographs  
(Sky blue  
background)

**APPLICATION FORM**

Please tick the box

MBBS

1. Name of Candidate (in Blocks Letter):

2. Gender: Male  Female

3. Father's Name:

4. Date of Birth: (DD-MM-YYYY) \_\_\_\_\_ Place of Birth: \_\_\_\_\_

5. Nationality (according to passport): \_\_\_\_\_

6. C.N.I.C. No.:  (if residing abroad, provide Social Security No.)

7. Applicant's Mobile No. \_\_\_\_\_ E-mail: \_\_\_\_\_

8. Passport No: \_\_\_\_\_

9. Current Residential Address: \_\_\_\_\_

\_\_\_\_\_

10. Permanent Address: \_\_\_\_\_

\_\_\_\_\_

11. Father's/Guardian's Name: \_\_\_\_\_ Occupation: \_\_\_\_\_

Educational Qualifications: \_\_\_\_\_ Office /Company Name: \_\_\_\_\_

Phone Home: \_\_\_\_\_ Office / Mob: \_\_\_\_\_ Email: \_\_\_\_\_

Father's Salary: \_\_\_\_\_ Other Source of Income: \_\_\_\_\_

12. Mother's Name: \_\_\_\_\_ Occupation: \_\_\_\_\_

Educational Qualifications: \_\_\_\_\_

Mobile: \_\_\_\_\_ Office: \_\_\_\_\_ Home: \_\_\_\_\_

Mother's Salary: \_\_\_\_\_ Other Source of Income: \_\_\_\_\_

Email Address: \_\_\_\_\_

13. No. of Siblings \_\_\_\_\_ Brothers: \_\_\_\_\_ Sisters: \_\_\_\_\_

14. Contact in case of emergency: Name: \_\_\_\_\_ Relation: \_\_\_\_\_

Postal Address: \_\_\_\_\_

Phone 1: \_\_\_\_\_ Phone 2: \_\_\_\_\_ Mobile: \_\_\_\_\_

14. Have you ever been admitted to any Medical College / undergraduate programme previously?  Yes  No

15. Academic Record:

Examination	Year of Passing	Institution's Name	Marks Obtained/ Total Marks
Matriculation/ 'O' Levels			
F.Sc./A-Level			
MCAT			
SAT II / Other Qualifications *			

\* As per PMDC/PCP requirements

(Candidates who hold qualifications other than F.Sc. and Matriculation will be required to provide Equivalence Certificate from the Inter-Board Committee Chairmen.)

16. Do you have any medical condition?  Yes  No

17. Are you on any kind of medication?  Yes  No

18. Hostel Accommodation Required:  Yes  No

(Limited hostel accommodation is available and priority is given to candidates from outside Lahore.)

19. DECLARATION: I Mr. / Ms. \_\_\_\_\_

Son / daughter of \_\_\_\_\_ an applicant

for admission to this Institute, solemnly affirm and declare that the above information provided by me is correct. I have obtained and understood the college prospectus and the term and conditions of the admission procedure. I agree to abide by the rules and regulations from time to time by the authorities of the institute. I undertake that I have adequate financial resources to support my studies at this institute for the entire duration of the course of study. I hereby assure that all dues will be paid by the due date according to payment schedule of institute. College fee, hostel & cafeteria charges may increase every year in accordance with the inflation and as per college policy.

I fully understand that the refund of any dues paid will be governed by the college refund policy. I will not object to any additional charges levied by the government, University or the College during the course of my studies. I will clear all my dues including tuition fee and hostel dues before submission of University professional exams application form every year. I authorize the college to utilize any refundable security for its business and operation purposes.

\_\_\_\_\_  
Applicant's Signatures  
with date

\_\_\_\_\_  
Parent's / Guardian's Signatures  
with date

Please attach photocopies of the following documents with your application:

CNIC/ Passport

MCAT Result Card

Matriculation Certificate or equivalent

4 Latest Photos (Passport size)

F.Sc. Certificate or equivalent

SAT II (If applicable)



## CODE OF CONDUCT

The medical profession involves extensive training to acquire comprehensive knowledge and specialized clinical skills that are founded upon robust ethical principles. As prospective members of the medical community, medical students are obligated to uphold the prescribed moral values essential for exceptional clinical practice and to conduct themselves in a manner consistent with the professional standards of this esteemed vocation.

Professionalism constitutes a fundamental element of the curriculum at RLKU Medical College. The primary goal of the college is to produce graduates who not only practice medicine safely and demonstrate exemplary professional conduct, but also demonstrate rationality, moderation, and compassion as individuals. The subsequent code of conduct outlines the fundamental values and principles that will assist students in achieving professional eminence and preparing for their forthcoming careers.

### **GENERAL BEHAVIOR**

Students are expected to consistently exhibit dignified professional conduct.

### **RESPECT FOR STAFF, STUDENTS, AND PATIENTS**

Students are required to demonstrate respect in their interactions with college and hospital staff, as well as with fellow students, irrespective of gender, age, culture, ethnicity, socio-economic status, and religious beliefs.

### **PROFESSIONAL INTEGRITY**

All students are expected to maintain elevated standards of professional integrity, emphasizing honesty and accountability in all professional and academic endeavors. Students must demonstrate honesty, dependability, and responsibility in their academic interactions, which includes fulfilling assigned tasks and responsibilities, meeting deadlines, maintaining punctuality and communicating intended absences. Forgery, cheating, falsification, and/or plagiarism are considered significant breaches of professional conduct.

## APPEARANCE AND DRESS CODE

- Students are required to adhere to the college's dress code standards. Professors, designated faculty members, and student prefects will report any dress code violations to the committee. Students who are inappropriately dressed may be excluded from educational settings, with repeat offenders being referred to the disciplinary committee. Generally, neat business wear (dress shirts, shoes and trousers for boys) is acceptable but casual wear is not appropriate.
- Shalwar kameez / kurta may only be worn on Fridays (for boys).
- Students are required to wear white lab coats during practical classes and in the hospital setting.
- Revealing attire is considered inappropriate to the work environment. Enclosed footwear must be worn at all times.
- Long hair should be neatly tied back. More stringent requirements may be necessary for certain areas (e.g. operating theatres).
- Jewelry or watches may be inappropriate in some rotations (e.g. radiology) - advice should be sought from the respective professors.
- Good personal hygiene standards must be maintained at all times.

## COMMUNICATION

Students are expected to employ appropriate language in all forms of verbal and written communication, including online interactions. They must refrain from communicating in an aggressive, hostile, derogatory, or demeaning manner toward other students or staff.

## IDENTIFICATION CARD

Students must visibly display official identification cards/ badges at all times.

Non-compliance may result in denial of entry into educational facilities.

## NON DISCRIMINATION POLICY

Students are expected to pursue medical training diligently and provide supervised competent medical service in a compassionate manner, exhibiting utmost respect for human dignity and refraining from any form of discrimination based on gender, ethnicity, race, color, or religious beliefs.

## CLASSROOM ETHICS

The college promotes interactive learning but mandates that students maintain decorum while engaging in classroom activities. Food items are prohibited in lecture theatres, and students are required to arrive punctually, with latecomers potentially being denied entry.

## MOBILE PHONES

The use of mobile phones is discouraged during formal academic activities such as lectures, small group discussions, and practical sessions. Students are strictly advised to keep their mobile phones on silent mode at all times during these activities.

## INTERNET USAGE

Our institution promotes the utilization of information technology, learning management systems, and social media tools to advance knowledge dissemination and improve the academic experience for students. To support this objective, we provide a fully equipped computer lab and offer unrestricted internet access across the campus. It is imperative that students use these facilities in accordance with established principles of cyber ethics. Please note that internet activity within the college is subject to monitoring for content aligning with the expected norms in academic and clinical settings. Any instances of internet misuse will result in disciplinary action.

## ACTION AFFECTING STUDENT STATUS

Strict disciplinary action may be taken against a student for offenses including:

- Attempt to disrupt teaching exam or administration
- Cheating
- Damaging and defacing property
- Ragging
- Defecting of library books  
Immorality and harassment
- Any act prejudice to the good order and college discipline
- Being disrespectful to a member of the faculty.

## Possible Reprimands

- Reprimands may include:
- Written warning
- Summoning of parents to the college
- Fines as determined by the disciplinary committee
- Suspension for 1 - 4 weeks

Monitoring of conduct, and potentially expulsion or rustication if no improvement is observed. In instances of severe offenses, withdrawal, expulsion, or rustication for 1 to 2 years may be imposed through the disciplinary committee. In the event of any transgressions within the institution, affiliated hospitals, or hostel premises, the institution's head may, at their discretion, refer the matter to the institution's disciplinary committee, which shall be constituted by the Academic Council as necessary.

A student may be subjected to a probationary period of up to three months. Failure to rectify conduct during this period may result in expulsion from the institution. Possible disciplinary actions include fines and suspension or termination of any scholarships.

The Head of the Institution, acting upon the disciplinary committee's recommendation, may suspend a student from the institution for a duration specified by the committee.

The Institution will also keep UHS informed.

## ATTENDANCE AND ACADEMIC PERFORMANCE

Students are expected to maintain a professional approach to their attendance and academic performance. It is their responsibility to ensure adequacy in both aspects. Repeated, unexplained, or unauthorized absence and/or academic insufficiency may result in barring from examinations, suspension, or termination of studies. Attendance at all time tabled activities across all years is mandatory, including being present in clinical settings (wards, clinics, emergency departments, theatres) when no other fixed time tabled activities are scheduled during college hours. Students may also be required to attend evening, early morning, and weekend sessions as directed by clinical supervisors.

A minimum attendance of 85% and an academic record above 60% in all subjects, whether examination or non-examination, from the first to final year are mandatory for admission to be sent for university professional examinations. Failure to adhere to attendance and academic performance regulations may lead to the withholding of admissions for university examination and/or detention.

## CAMPUS CLEANLINESS

Emphasizing campus beautification and cleanliness is a key priority for the college. Students are strongly encouraged to actively participate in maintaining the campus and to demonstrate environmentally responsible behaviour. Any instances of littering or improper waste disposal will be reported and subject to penalties.

## COMMUNICATIONS WITH MEDIA & PUBLIC

Students are not permitted to engage with the media or the public on matters pertaining to the college or its affiliated institutions unless provided with explicit authorization.

## LEAVE OF ABSENCE

**Our Stance on Student Leave Culture** We firmly believe that a student is either present or absent from scheduled teaching sessions. This stance is rooted in our dedication to providing an uninterrupted and enriching academic experience for our students. We encourage students to embrace the value of consistent engagement with their education. A prescribed absence notification form should be submitted by the student, outlining the reason for the absence and the expected duration. This form must be submitted in person prior to the absence. In cases of emergency, the form should be submitted within one day of the student's next physical presence.

### Review of Absence Information:

If a student's attendance falls below the required percentage by the end of the academic session, the concerned department, and the Principal of RLKU Medical College will review the submitted Absence Information Reports. The RLKU Medical College Student Attendance Policy underscores our commitment to maintaining a high standard of education through consistent attendance. We firmly reject the notion of a student leave culture, focussing instead on active participation and commitment to the learning journey. Note: Should you have any questions or require further clarification on this policy, please feel free to reach out to the concerned administrative department.



## **USE OF LIBRARY**

The college library serves as an invaluable repository of knowledge comprising the latest editions of textbooks, reference materials, periodicals, and journals covering a vast array of medical and allied health subjects. Students must uphold the sanctity of the college library and respect the valuable resources and educational materials it holds. Adherence to the general library policies and specific protocols is mandatory for all students.

## **CONFIDENTIALITY**

Information provided to healthcare professionals must be handled with absolute confidentiality. Medical students have the privilege and responsibility of accessing this information.

## **ANTI-RAGGING POLICY**

The institution maintains a rigorous anti-ragging policy. Any action that negatively impacts a student's physical, psychological, social, political, economic, cultural, and/or academic well-being is considered as ragging. Instances of ragging will be reported to the Principal, leading to stringent disciplinary measures. Punishments for those involved will be severe and exemplary to deter future incidents.

## **USE OF NARCOTIC DRUGS AND WEAPONS**

Alcohol consumption, substance abuse, or possession of weapons by students is strictly prohibited. Immediate dismissal from the college will occur if a student is believed to be under the influence of alcohol or any other substance, or if found in possession of a weapon. Such violations will prompt disciplinary action and can lead to expulsion from the college.

## **INVOLVEMENT IN POLITICAL ACTIVITIES**

As a student of RLKU Medical College, participation in political activities, or the solicitation of others to partake in such activities, is deemed inappropriate during college hours or at any other time. Students are expected to adhere to principles that prevent political or unethical considerations, as well as personal beliefs, from influencing or disrupting academic pursuits.

## **BEHAVIOR IN CLINICAL SETTINGS**

Throughout the MBBS program at RLKU Medical College, students engage in various clinical rotations, offering an opportunity to demonstrate professional behavior and ethical practice. Students are expected to adhere to the institution's Code of Conduct during these placements.

## **MISCONDUCT WITH PATIENTS**

While involved in patient care, students must refrain from engaging in inappropriate or non-professional relationships with patients, even if requested. Any such misconduct will result in severe disciplinary action.

## **PATIENT EXAMINATION**

The clinical supervisor's consent must be obtained before examining or speaking to a patient in a hospital ward, and all standard precautions must be followed during patient examinations. Intimate examinations, for instance, digital rectal examinations, should not be conducted without a doctor's supervision and the patient's consent. All bedside regulations, including but not limited to informed consent and patient privacy, must be respected.

## **MIGRATION POLICY**

### **APPLICATION PROCEDURE:**

**ELIGIBLE CANDIDATES CAN APPLY THROUGH THE UHS ONLINE PORTAL**

### **ELIGIBILITY CRITERIA:**

1. The applicant must be enrolled in a Private Sector Medical/Dental College duly recognized by Pakistan Medical and Dental Council (PM&DC).
2. For migration to the Third, Fourth or Final Year MBBS, the student must have passed the MBBS Second Professional, Third Professional or Fourth Professional university examination respectively.
3. For migration to the Second, third or Final Year BDS, the student must have passed the BDS First Professional, Second Professional or Third Professional university examination respectively.
4. In case of inter-university migrations, UHS Equivalence/Relevance Committee shall determine the equivalence in terms of courses and subjects studied passed and shall identify the deficient courses and subjects. Migrations shall not be allowed to students having deficient courses and subjects for the said level.
5. A student studying in a foreign college/institute may apply for migration to an affiliated private sector medical/dental institution subject to having completed at-least two years of studies and passed the corresponding final examinations for the period of study completed in the foreign college / institute and having qualified the National Equivalence Board (NEB) Exam conducted by the Pakistan Medical & Dental Council (PM&DC). In case a prescribed subject is being taught at the University but not examined in the NEB Examination, UHS shall conduct an examination in the said subject.

## **STUDENT HEALTH CARE POLICY**

RLKU Medical College has enacted a Student Discount Policy, offering a 100% discount on hospital charges, 50% discount in the Laboratory, Blood Bank, Radiology, and a 10% discount in the Pharmacy at HLTH. The HLTH premises hosts a fully equipped Laboratory that provides services to both patients and students. The Health Care Policy aims to grant students access to preventive and therapeutic health services, thus maintaining their overall well-being. To achieve this goal, a team of healthcare professionals and an interdepartmental referral system have been put in place. Students are not required to pay a subscription fee. The Student Discount Policy at RLUK Medical College ensures that students receive medical coverage for day-to-day medical issues and facilitates access to necessary medical assistance during emergencies throughout their educational tenure.